

High-Frequency Stators

› GENERAL PERFORMANCE PARAMETER RANGE

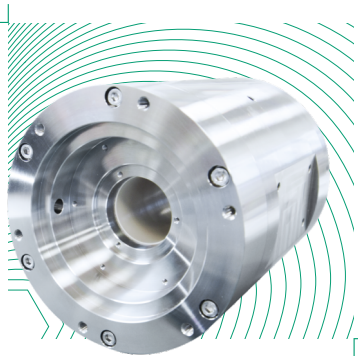
- + Motor power: up to 100 kW
- + Voltage: up to 800 V
- + Phase current: up to 300 A RMS
- + Number of pole pairs: 1 or 2 [adaptable to requirements]
- + Shaft speed: 10 000 RPM to 300 000 RPM
- + Thermal management: active liquid or gas flow cooling
- + Load profile: pump, compressor, turbine [acts as generator]

› DESIGN OPTIONS

- + Hermetically isolated winding
 - + Thermally optimised design with fluid-cooled housing
 - + Single point failure free winding
 - + Standard cost-optimized design
 - + Stator cooling and heat recovery via liquid/gas flow
- Features can be combined as desired

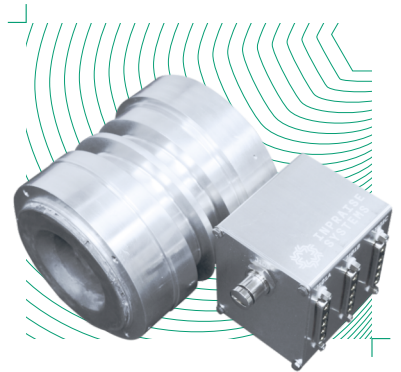
› inPhase HFS-300

- + Nominal phase current: 85 A RMS
- + Voltage: 400 V
- + Dimensions [mm]:
Ø = 300; l = 360



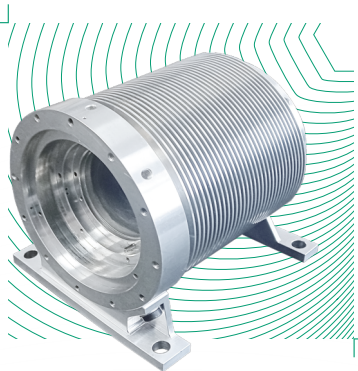
› inPhase HFS-150

- + Nominal phase current: 120 A RMS
- + Voltage: 300 V
- + Dimensions [mm]:
Ø = 110; l = 110



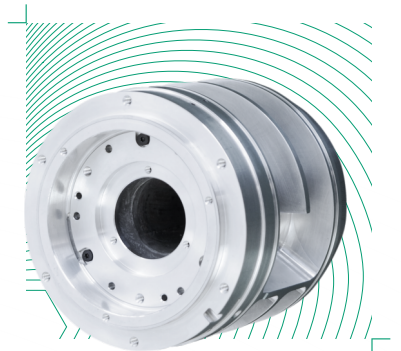
› inPhase HFS-100

- + Nominal phase current: 22 A RMS
- + Voltage: 400 V
- + Dimensions [mm]:
Ø = 120; l = 130



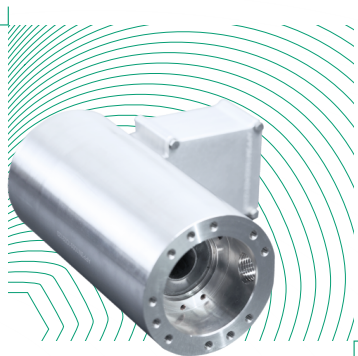
› inPhase HFS-60

- + Nominal phase current: 15 A RMS
- + Voltage: 400 V
- + Dimensions [mm]:
Ø = 110; l = 110



› inPhase HFS-15

- + Nominal phase current: 3 A RMS
- + Voltage: 150 V
- + Dimensions [mm]:
Ø = 80; l = 160



› inPhase HFS-10

- + Nominal phase current: 24 A RMS
- + Voltage: 48 V
- + Dimensions [mm]:
Ø = 90; l = 70

